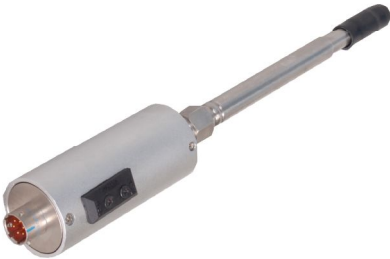


LH-156熔体压力传感器

特点和用途：
刚性杆、软管隔离、膜片隔离结构、良好的稳定性和精度；
应用于化纤纺丝、聚酯、橡塑机械等设备的高温流体介质的压力测量与控制。

Features & Applications:
Steel stem, flexible tube isolated, diaphragm isolated construction, good stability and high accuracy.
This EPT112 series are suitable for the pressure measuring and controlling in the high temperature liquid medium of the chemical fiber filature, polyester, the equipment of rubber plastic machine and etc.

量程/Capacity: 0~30bar~2000bar



主要技术参数(Specification)	
输出灵敏度(Rated Output)	2 2.5 3.33 (mV / V)
零点平衡输出(Zero balance)	± 2 % F.S.
综合精度(Comprehensive accuracy)	0.25, 0.5 % F.S.
膜片耐温温度范围(Temp. Resist Range of diaphragm)	300°C
供电电压(Power Supply)	10 V
最大激励电压(Maximum excitation)	15 V
电器连接(Electrical connection)	5 PIN & 8 PIN接插件(5 PIN & 8 PIN connector)
过程连接(Process connection)	1/2-20UNF; M14×1.5 ; M18×1.5; (可特殊设计) (can make according to customer's requirement)