

LH-146

特点和用途:

桥式合金钢制称重传感器。

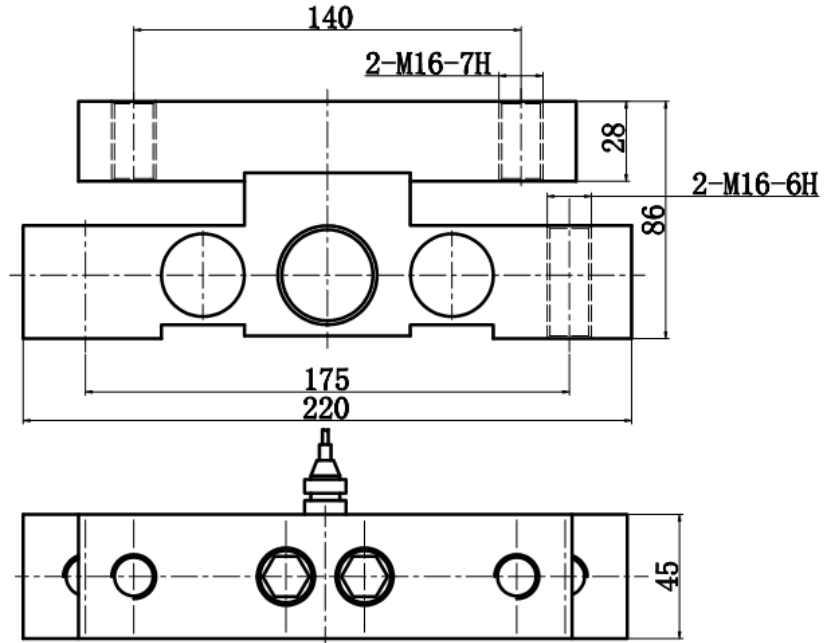
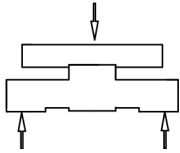
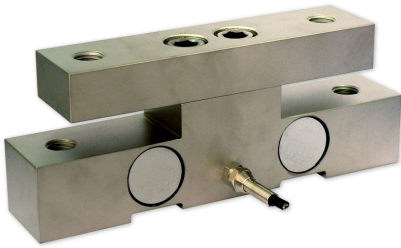
应用于汽车检测线、工业台秤、天车等称重系统。

量程/Rated Load: 3,4,5t

Features & Applications:

Bridge, alloy steel load cell.

Mainly used for platform scale, industrial scale and vehicle scales.



主要技术参数(Specification)

输出灵敏度(Rated output)	2.0 ± 1% mV / V	输出电阻(Input impedance)	700 ± 5 Ω
	3.0 ± 1% mV / V	绝缘电阻(Insulation)	≥5000M Ω /100VDC
零点输出(Zero balance)	± 1 % F.S.	使用电压 (Recommended excitation)	10V
非线性(Non-linearity)	0.03 % F.S.	最大使用电压 (Maximum excitation)	15 V
滞后(Hysteresis)	0.03 % F.S.	温度补偿范围 (Compensated temperature range)	- 10 ~ 50 °C
重复性(Repeatability)	0.02 % F.S.	工作温度范围 (Operation temperature range)	- 20 ~ 60°C
蠕变(30分钟) Creep(30min)	0.05 % F.S.	安全超载(Safe overload)	150% F.S.
温度灵敏度漂移 (Temperature effect on output)	0.02 % F.S. / 10°C	极限超载(Ultimate overload)	200 % F.S.
零点温度漂移 (Temperature effect on zero)	0.02 % F.S. / 10°C	电缆线尺寸(Cable size)	Ø5 × 1000 mm
输入电阻(Input impedance)	770 ± 10 Ω	防护等级 (Protection Class)	IP 67
连接方式Cable Color Code		Input: Red(+) Black(-); Output: Green(+) White(-); 输入: 红 (+) 黑 (-); 输出: 绿 (+) 白 (-)	