

LH-141

特点和用途:

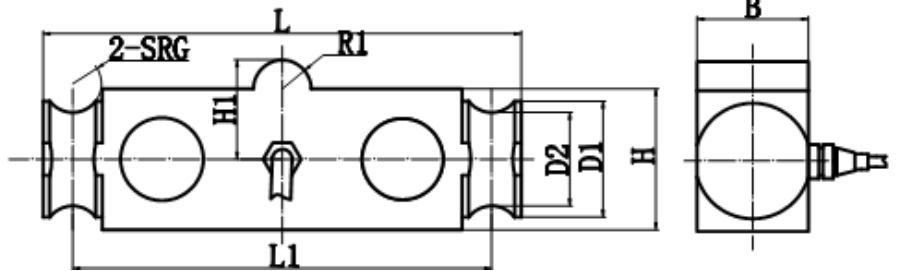
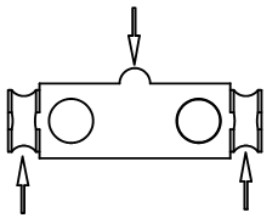
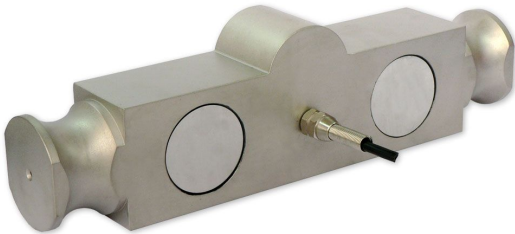
桥式合金钢制称重传感器。

用于吊钩秤、汽车衡、工业称重系统。

Features & Applications:

Bridge, alloy steel load cell.

Mainly used for vehicle scales, hanging scales and industrial weighing system.



量程 (capacity) lb	尺寸 (size) inch									
	L	B	C	D	E	F	G	H	J	K
25 ~ 40 k	8.25	0.50	1.63	2.00	0.50	0.50	7.25	1.75	1.94	2.44
50 ~ 75 k	11.2 5	0.75	1.70	2.20	0.75	1.00	10.0	2.00	1.94	2.94
100 ~ 125 k	14.5	1.00	2.44	3.20	1.00	1.50	12.5	2.75	2.90	3.86

主要技术参数(Specification)

输出灵敏度(Rated output)	3.0 ± 1% mV / V	绝缘电阻(Insulation)	≥5000MΩ / 100VDC
零点输出(Zero balance)	± 1 % F.S.	使用电压 (Recommended excitation)	10V
非线性(Non-linearity)	0.03 % F.S.	最大使用电压 (Maximum excitation)	15 V
滞后(hysteresis)	0.03 % F.S.	温度补偿范围 (Compensated temperature range)	- 10 ~ 40 °C
重复性(Repeatability)	0.02 % F.S.	工作温度范围 (Operation temperature range)	- 20 ~ 60°C
蠕变 (30分钟) Creep(30min)	0.05 % F.S.	安全超载(Safe overload)	150% F.S.
温度灵敏度漂移 (Temperature effect on output)	0.03 % F.S. / 10°C	极限超载(Ultimate overload)	200 % F.S.
零点温度漂移 (Temperature effect on zero)	0.03 % F.S. / 10°C	电缆线尺寸(Cable size)	Ø5 × 6000 mm
输入电阻(Input impedance)	780 ± 10 Ω	防护等级 Protection Class	IP67
输出电阻(Output impedance)	700 ± 5 Ω		
连接方式Cable Color Code		Input: Red(+) Black(-); Output: Green(+) White(-); 输入: 红 (+) 黑 (-); 输出: 绿 (+) 白 (-)	