

# LH138

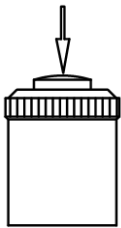
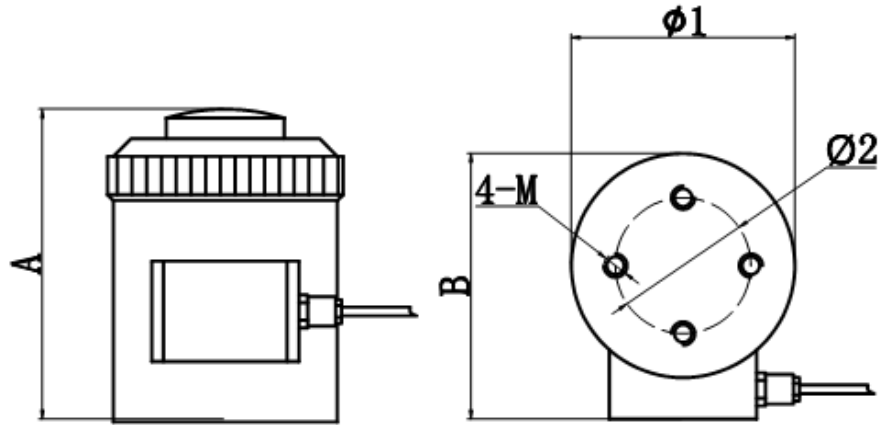
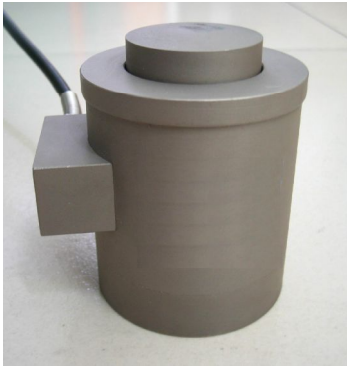
## 特点和用途:

压式合金钢制称重传感器。  
用于汽车衡、台秤、工业称重系统。

## Features & Applications:

Compression, alloy steel load cell.

Mainly used for vehicle scales, platform scale and industrial weighing system.



量程 (capacity)	尺寸 (size) mm			
	0.1, 0.2, 0.3, 0.5, 0.7, 1, 2, 3, 5t	10t	15, 20t	30t
A	88	106	130	126
B	78	88	107	128
Ø1	64	76	88	106
Ø2	38	46	56	72
M	8	8	8	10

主要技术参数(Specification)			
输出灵敏度(Rated output)	2.0 ± 1% mV / V	绝缘电阻(Insulation)	≥5000MΩ /100VDC
零点输出(Zero balance)	± 1 % F.S.	使用电压 (Recommended excitation)	10V
非线性(Non-linearity)	0.05 % F.S.	最大使用电压 (Maximum excitation)	15 V
滞后(Hysteresis)	0.05 % F.S.	温度补偿范围 (Compensated temperature range)	- 10 ~ 50 °C
重复性(Repeatability)	0.03 % F.S.	工作温度范围 (Operation temperature range)	- 20 ~ 60°C
蠕变 (30分钟) Creep(30min)	0.05 % F.S.	安全超载(Safe overload)	150% F.S.
温度灵敏度漂移 (Temperature effect on output)	0.03 % F.S. / 10°C	极限超载(Ultimate overload)	200 % F.S.
零点温度漂移 (Temperature effect on zero)	0.03 % F.S. / 10°C	电缆线尺寸(Cable size)	Ø5 × 6000 mm
输入电阻(Input impedance)	385 ± 10(700 ± 15) Ω	台面尺寸(Platform size)	
输出电阻(Output impedance)	350 ± 3(650 ± 5) Ω	防护等级 (Protection Class)	IP67
连接方式Cable Color Code		Input: Red(+) Black(-); Output: Green(+) White(-); 输入: 红 (+) 黑 (-); 输出: 绿 (+) 白 (-)	