

LH132

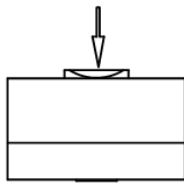
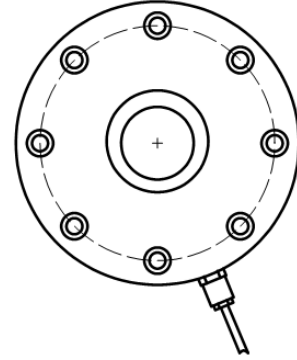
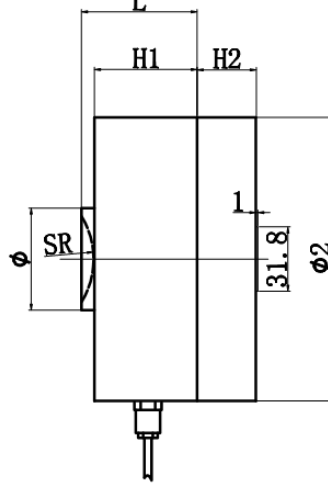
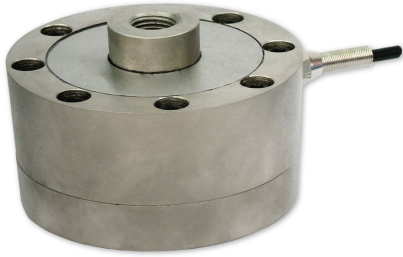
特点和用途:

轮辐式合金钢制称重传感器。
用于汽车衡、台秤、地中衡、工业称重

Features & Applications:

Wheel shaped, alloy steel load cell.

Mainly used for platform scale, truck scale, floor scale and industrial weighing system



| 量程(capacity) | | 尺寸(size) mm | | | | | |
|--------------|---------|-------------|----|----|----|----|----------|
| lb | t | ϕ | SR | L | H1 | H2 | $\phi 2$ |
| 5 ~ 10 k | 2 ~ 5 | 34 | 16 | 44 | 32 | 32 | 105 |
| 25 ~ 50 k | 10 ~ 25 | 41 | 22 | 54 | 47 | 47 | 121 |
| 100 k | 50 | 51 | 22 | 57 | 51 | 51 | 140 |

| 主要技术参数(Specification) | | | |
|---|--------------------|--|----------------------|
| 输出灵敏度(Rated output) | 2.0 ± 1% mV / V | 输入电阻(Input impedance) | 385 ± 10(750 ± 15) Ω |
| | 4.0 ± 1% mV / V | 输出电阻(Output impedance) | 350 ± 3(700 ± 5) Ω |
| 零点输出(Zero balance) | ± 1% F.S. | 绝缘电阻(Insulation) | ≥ 5000M Ω / 100VDC |
| 非线性(Non-linearity) | 0.02 % F.S. | 使用电压 (Recommended excitation) | 10V |
| | 0.03 % F.S. | 最大使用电压 (Maximum excitation) | 15 V |
| 滞后(Hysteresis) | 0.02 % F.S. | 温度补偿范围 (Compensated temperature range) | - 10 ~ 50 °C |
| | 0.03 % F.S. | 工作温度范围 (Operation temperature range) | - 20 ~ 60°C |
| 重复性(Repeatability) | 0.03 % F.S. | 安全超载(Safe overload) | 150% F.S. |
| 蠕变(30分钟) Creep(30min) | 0.05 % F.S. | 极限超载(Ultimate overload) | 200 % F.S. |
| 温度灵敏度漂移 (Temperature effect on output) | 0.03 % F.S. / 10°C | 电缆线尺寸(Cable size) | ∅5 × 6000 mm |
| 零点温度漂移 (Temperature effect on zero) | 0.03 % F.S. / 10°C | 防护等级 (Protection Class) | IP67 |
| 连接方式Cable Color Code | | Input: Red(+) Black(-); Output: Green(+) White(-); 输入: 红 (+) 黑 (-); 输出: 绿 (+) 白 (-) | |