

## ■ LH113

### 特点和用途:

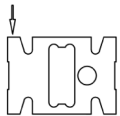
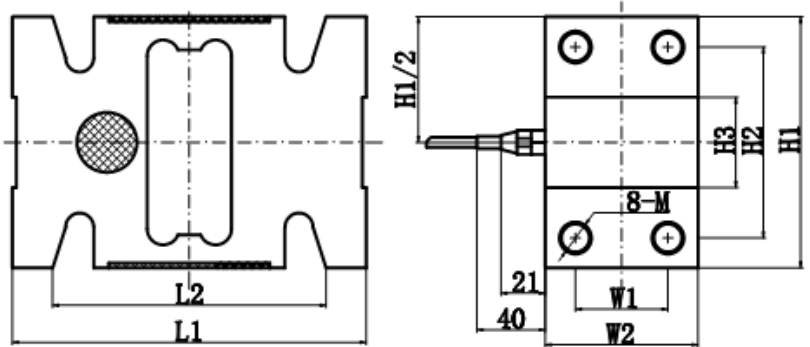
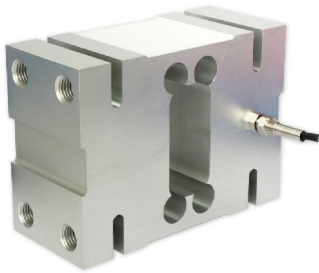
单点平行梁结构， 铝合金制称重传感器。用于电子台秤、台秤及工业称重系统。

### Features & Applications:

Single point parallel beam, aluminium load cell.

Mainly used for platform scale, electronic balance and industrial weighing system.

量程/Capacity: 100, 150, 200, 300, 500, 600, 750, 800, 1000, 1500, 2000 kg



量程(capacity) kg	L1	L2	H1	H2	H3	W1	W2	M	台面尺寸 (platform size)
750, 1000, 1500, 2000	176.0	134	125	95	45	46	76	M16 × 2.0	1200 × 1200
100, 200, 300, 500, 600	140		75	50	30	25	46	M10 × 20	800 × 1200

### 主要技术参数(Specification)

输出灵敏度(Rated output)	2.0 ± 10% V / V	绝缘电阻(Insulation)	≥5000M Ω /100VDC
零点输出(Zero balance)	± 2 % F.S.	使用电压 (Recommended excitation)	10V
非线性(Non-linearity)	0.02 % F.S.	最大使用电压 (Maximum excitation)	15 V
滞后(Hysteresis)	0.02% F.S.	温度补偿范围 (Compensated temperature range)	- 10 ~ 40 °C
重复性(Repeatability)	0.02% F.S.	工作温度范围 (Operation temperature range)	- 20 ~ 60°C
蠕变 (30分钟) Creep(30min)	0.03 % F.S.	安全超载(Safe overload)	150% F.S.
温度灵敏度漂移 (Temperature effect on output)	0.025 % F.S. / 10°C	极限超载(Ultimate overload)	200 % F.S.
零点温度漂移 (Temperature effect on zero)	0.025 % F.S. / 10°C	电缆线尺寸(Cable size)	Ø 5 × 2000mm
输入电阻(Input impedance)	410 ± 10 Ω	台面尺寸(Platform size)	1200 × 1200mm 800 x 800mm
输出电阻(Output impedance)	350 ± 3 Ω	防护等级 (Protection Class)	IP 65
连接方式Cable Color Code	Input: Red(+) Black(-); Output: Green(+) White(-); 输入: 红 (+) 黑 (-); 输出: 绿 (+) 白 (-)		