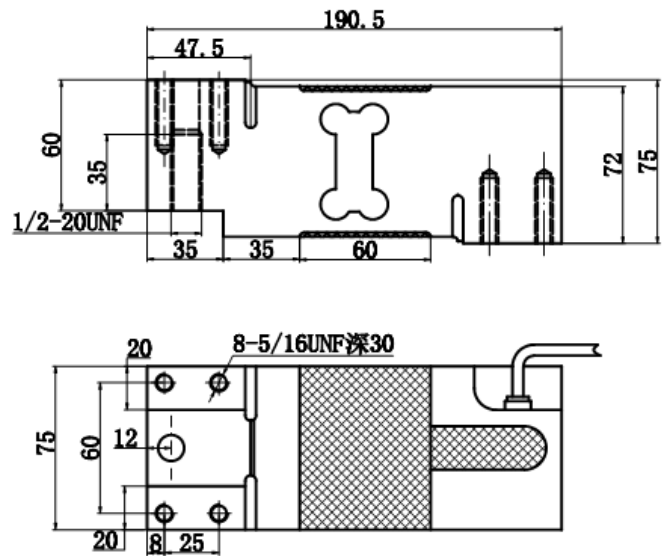
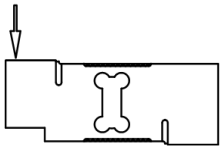
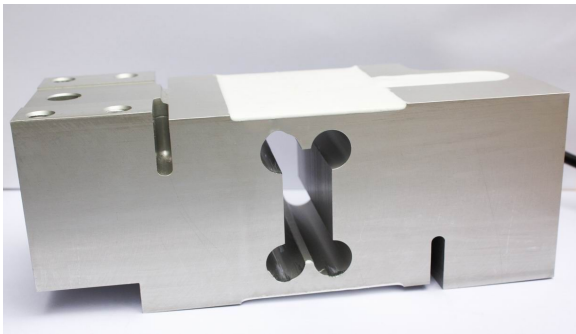


LH111

特点和用途: Features & Applications:
 单点平行梁结构铝制传感器
 Double-point shear beam, aluminum load cell.
 用于电子秤、台秤、磅秤及工业称重系统等。
 Mainly used for electronic scale, platform scale, electronic balance and industrial weighing system.

量程/Rated Load: 50, 100, 500, 635, 750, 1000, 1500, 2000 kg



主要技术参数(Specification)

输出灵敏度(Rated output)	2.0 ± 10% mV / V	输出电阻(Output impedance)	350 ± 3 Ω
零点输出(Zero balance)	± 1% F.S.	绝缘电阻(Insulation)	≥5000M Ω /100VDC
非线性(Non-linearity)	0.03 % F.S.	使用电压 (Recommended excitation)	10V
滞后(Hysteresis)	0.03 % F.S.	最大使用电压 (Maximum excitation)	15 V
重复性(Repeatability)	0.03 % F.S.	温度补偿范围 (Compensated temperature range)	- 10 ~ 40 °C
蠕变 (30分钟) Creep(30min)	0.03 % F.S.	工作温度范围 (Operation temperature range)	- 20 ~ 60°C
温度灵敏度漂移 (Temperature effect on output)	0.025 % F.S. / 10°C	安全超载(Safe overload)	150% F.S.
零点温度漂移 (Temperature effect on zero)	0.025 % F.S. / 10°C	极限超载(Ultimate overload)	300 % F.S.
		防护等级 (Protection Class)	IP65
输入电阻(Input impedance)	410 ± 10 Ω	电缆线尺寸(Cable size)	Ø 5 × 2000 mm

连接方式Cable Color Code

Input: Red(+) Black(-); Output: Green(+) White(-);
 输入: 红 (+) 黑 (-); 输出: 绿 (+) 白 (-)