

■ LH107

特点和用途:

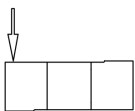
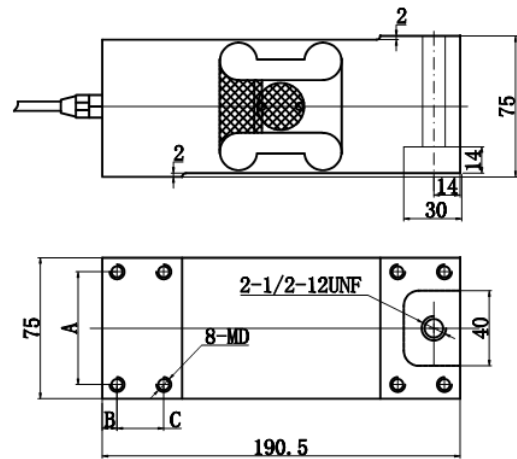
单点式铝合金制称重传感器。精度高、抗偏载能力强，结构简单，容易安装。适用于电子秤、磅秤、测力称重系统。

Features & Applications:

Single-ended, aluminum Load Cell.

High Accuracy, good side load tolerance, simple structure, easy to install,

Mainly used for electronic scale and weighing system.



量程 (capacity)	A	B	C	D	
				英制 (British system)	公制 (metric system)
50 ~ 1000 kg	60	7.85	24.9	5 / 16 ~ 18 深 (high)20	M8 深(high)20
1500 ~ 2000 kg	50	12.5	25	1 / 2 ~ 20 深20	M12 深20

主要技术参数(Specification)			
输出灵敏度(Rated output)	2.0 ± 10% mV / V	绝缘电阻(Insulation)	≥5000MΩ / 100VDC
零点输出(Zero balance)	± 2 % F.S.	使用电压 (Recommended excitation)	10V
非线性(Non-linearity)	0.02% F.S.	最大使用电压 (Maximum excitation)	15V
滞后(Hysteresis)	0.02% F.S.	温度补偿范围 (Compensated temperature range)	- 10 ~ 40 °C
重复性(Repeatability)	0.02 % F.S.	工作温度范围 (Operation temperature range)	- 20 ~ 60 °C
蠕变 (30分钟) Creep(30min)	0.03 % F.S.	安全超载(Safe overload)	150% F.S.
温度灵敏度漂移 (Temperature effect on output)	0.025 % F.S. / 10°C	极限超载(Ultimate overload)	300 % F.S.
零点温度漂移 (Temperature effect on zero)	0.025 % F.S. / 10°C	电缆线尺寸(Cable size)	Ø 5 × 2000 mm
输入电阻(Input impedance)	410 ± 10 Ω	台面尺寸(Platform size)	600 × 700 mm
输出电阻(Output impedance)	350 ± 3 Ω	防护等级 (Protection Class)	IP 65
连接方式Cable Color Code		Input: Red(+) Black(-); Output: Green(+) White(-); 输入: 红 (+) 黑 (-); 输出: 绿 (+) 白 (-)	