

■ LH106

特点和用途:

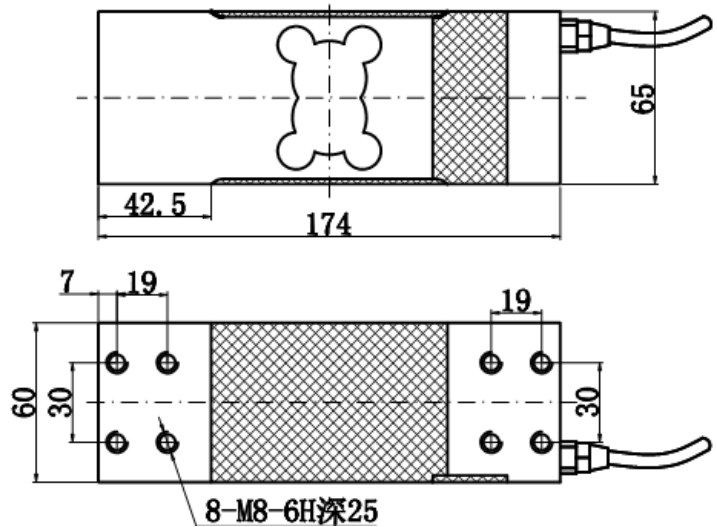
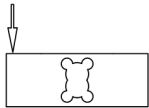
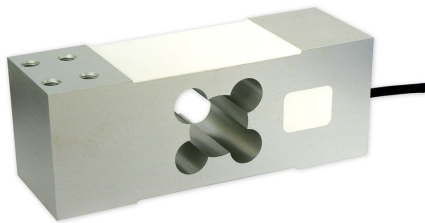
单点式铝合金制称重传感器。精度高、抗偏载能力强，结构简单，容易安装。适用于电子台秤、测力称重系统。

Features & Applications:

Single-ended, aluminum Load Cell. High Accuracy, good side load tolerance, simple structure, easy to install

Mainly used for electronic scale and weighing system.

量程/Capacity: 50, 60, 100, 150, 200, 300, 500, 600, 750 kg



主要技术参数(Specification)			
输出灵敏度(Rated output)	2.0 ± 10% mV / V	绝缘电阻(Insulation)	≥5000MΩ /100VDC
零点输出(Zero balance)	± 2 % F.S.	使用电压 (Recommended excitation)	10V
非线性(Non-linearity)	0.02 % F.S.	最大使用电压 (Maximum excitation)	15V
滞后(Hysteresis)	0.02 % F.S.	温度补偿范围 (Compensated temperature range)	- 10 ~ 40 °C
重复性(Repeatability)	0.02 % F.S.	工作温度范围 (Operation temperature range)	- 20 ~ 60 °C
蠕变(30分钟) Creep(30min)	0.03 % F.S.	安全超载(Safe overload)	150 % F.S.
温度灵敏度漂移 (Temperature effect on output)	0.025 % F.S. / 10°C	极限超载(Ultimate overload)	300% F.S.
零点温度漂移 (Temperature effect on zero)	0.025 % F.S. / 10°C	电缆线尺寸(Cable size)	∅ 5 × 2000mm
输入电阻(Input impedance)	410 ± 10 Ω	台面尺寸(Platform size)	450 × 550mm
输出电阻(Output impedance)	350 ± 3 Ω	防护等级 (Protection Class)	IP 65
连接方式Cable Color Code		Input: Red(+) Black(-); Output: Green(+) White(-); 输入: 红 (+) 黑 (-); 输出: 绿 (+) 白 (-)	