

# LH102

## 特点和用途:

单点式铝合金制称重传感器。精度高、抗偏载能力强，结构简单，容易安装。适用于电子秤、电子天平及工业称重系统。

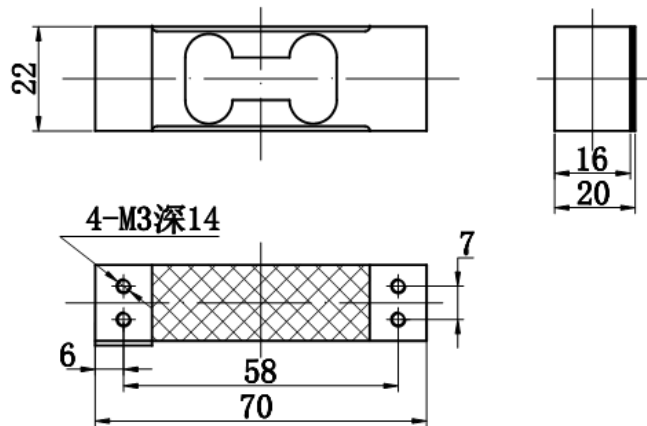
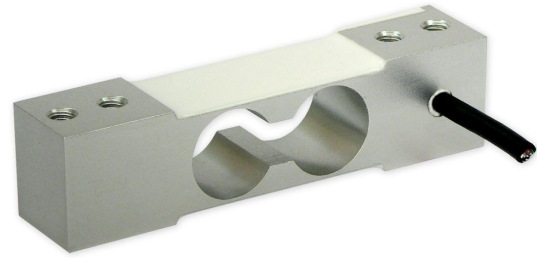
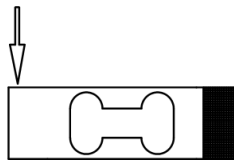
## Features & Applications:

Single-ended, aluminum Load Cell,  
High Accuracy, good side load tolerance,  
Simple Structure, easy to install.  
Mainly used for electronic scale, balance  
and industrial weighing system.

## 量程/Capacity :

0.3, 0.5, 1, 1.5, 2, 3, 4, 5 kg

## 受力方式 / Load Instruction



主要技术参数(Specification)					
输出灵敏度	(Rated output)	2.0 ± 10% (≥ 1.5 kg) mV / V	绝缘电阻	(Insulation)	≥5000M Ω/100VDC
		1.0 ± 10% (≤ 1 kg) mV / V	激励电压	(Recommended excitation)	10V
零点输出)	(Zero balance	± 2% F.S.	最大激励电压	Maximum excitation	15V
非线性	(Non-linearity)	0.02 % F.S.	温度补偿范围	Compensated temp range)	- 10 ~ 40 °C
滞后	(Hysteresis	0.02 % F.S.	工作温度范围	Operation temperature range	- 20 ~ 60 °C
重复性	(Repeatability)	0.02% F.S.	安全超载	Safe overload	150 % F.S.
蠕变 (30分钟)	Creep(30min)	0.03 % F.S.	极限超载	Ultimate overload	300 % F.S.
温度灵敏度漂移	(Temp. effect on output)	0.025 % F.S. / 10°C	电缆线尺寸	Cable size	Ø 3 × 450 mm
零点温度漂移	(Tempe effect on zero)	0.025 % F.S. / 10°C	台面尺寸	Platform size	200 × 200 mm
输入电阻	(Input impedance)	410 ± 10 Ω	防护等级	Protection Class	IP65
输出电阻)	(Output impedance)	350 ± 3			
连接方式Cable Color Code			Input: Red(+) Black(-); Output: Green(+) White(-); 输入: 红 (+) 黑 (-); 输出: 绿 (+) 白 (-)		